

S1500

For Windows

Organize your business
Organize your life

Fast double-sided colour scanning at 20 pages per minute

Scan directly to Microsoft® Word, Excel, or PowerPoint

Organize and search documents and business cards

Saves and indexes documents into SharePoint

Scan to Email and Scan to Print functions

One button scanning to PDF or JPEG

Includes:

ScanSnap Manager Driver for Mac OS X



THE POSSIBILITIES ARE INFINITE

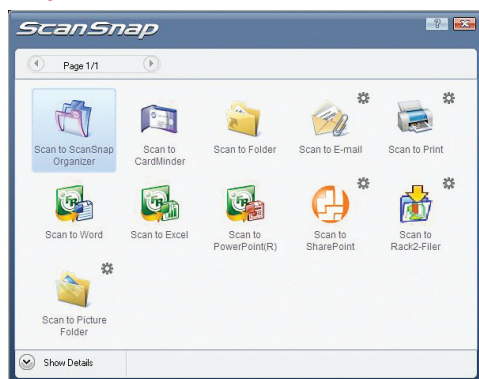
Fast Duplex Colour Scanning

- 20 double sided pages per minute (40 images per minute)
- 50 page automatic document feeder

User Friendly & Convenient

- Scan to PDF or JPEG with one touch
- Auto detects paper size: business card to legal
- Auto corrects skewed images
- Auto deletes blank pages
- Auto page orientation
- Auto detects B&W, greyscale or colour documents

Easy to use "Quick Menu"



"Quick Menu" of S1500 Deluxe version shown above.

Organizes Documents & Business Cards

- Manage your scanned documents and conduct quick searching with ScanSnap Organizer
- Automatically convert scanned images to text-searchable PDF
- Automatically extracts contact information from business cards. Export card data to popular contact management software
- Scan to email with PDF or JPEG attachments

Scan Documents into Microsoft™ Office

- Scans directly to Word, Excel or PowerPoint using ABBYY FineReader for ScanSnap

Space Saving, Portable Design

- Approximately 12" wide, 6" high, and 6" deep
- Security Port to lock down scanner
- Portability - ScanSnap carrying case available

Mac Drivers Included

- The ScanSnap S1500 (for Windows®) also includes ScanSnap Manager for Mac OS providing basic functionality in a Mac environment

Warranty Plus

- 1 year Advance exchange anywhere in Canada

Visit www.fujitsu.ca/scansnap for more details

Deluxe version now available

- The ScanSnap S1500 Deluxe comes bundled with Rack2-Filer software which provides the look and feel of paper in an electronic environment.

Technical Specifications

Scanner type	ADF (Automatic Document Feeder), Duplex scanning	
Scanning modes ¹	Colour / Greyscale / B&W / Automatic detection	
Scanning speed	Normal	20 ppm / 40 ipm (150 dpi colour/greyscale or 300 ⁷ dpi B&W)
	Better	20 ppm / 40 ipm (200 dpi colour/greyscale or 400 ⁷ dpi B&W)
	Best	20 ppm / 40 ipm (300 dpi colour/greyscale or 600 ⁷ dpi B&W)
	Excellent	5 ppm / 10 ipm (600 dpi colour/greyscale or 1200 ⁷ dpi B&W)
ppm = Pages per minute; ipm = Images per minute; dpi = Dots per inch		
Paper size	Business cards to Legal size (Up to 11"x17" using carrier sheet)	
Paper weight	14 to 34 lb	
Feeder capacity	Maximum 50 sheets at Letter size, 20 lb	
Driver ²	ScanSnap Manager / (does not support TWAIN/ISIS™)	
Output formats	PDF, searchable PDF or JPEG	
Dimensions (WxDxH) ³	29.2x15.9x15.8 cm	
Weight	3.0 kg	
Environmental compliance	EnergyStar® and RoHS	

System Requirements

Operating System	Windows® 7 (32/64 bits), Vista (32/64 bits), XP ⁶ , 2000 Pro ⁵
CPU ⁴	Intel® Pentium® III 600 MHz or higher (Intel® Pentium® 4 1.8 GHz or higher recommended)
System Memory	256 MB or higher (512 MB or higher recommended)
Hard Disk Capacity	At least 1.7 GB necessary for installation
Optical Drive	DVD drive required for software installation
Interface port	USB 2.0 / USB 1.1

In The Box

Hardware	One ScanSnap S1500 unit
	One USB cable
	One AC adapter
	One ScanSnap Carrier Sheet
	One Getting Started Guide
Bundled Software	ScanSnap Manager v5.0 (for Windows®)
	ScanSnap Manager v3.0 (for Macintosh®)
	ScanSnap Organizer v4.0 (for Windows®)
	PFU CardMinder™ v4.0 (for Windows®)
	Adobe Acrobat® 9 standard version (for Windows®)
	ABBYY FineReader for ScanSnap v4.0 (for Windows®)
	Rack2-filer v5.0 (for Windows®) only with ScanSnap Deluxe

1) Scanning speeds may vary due to the system environment used

2) TWAIN or ISIS™ applications cannot be used directly

These applications can be launched by ScanSnap if they support PDF or JPEG file types

3) Stacker external attachments excluded

4) Scanning speed slows down when recommended requirements are not met

5) With Service Pack 4 or higher

6) With Service Pack 2 or higher

7) B&W resolution interpolated from colour/greyscale resolution

Fujitsu and the Fujitsu logo are registered trademarks of Fujitsu Limited. Adobe, Acrobat, Adobe PDF logo are either registered trademarks or trademarks of Adobe Systems Incorporated in the United States and/or other countries. All the other trademarks mentioned herein are the property of their respective owners. Specifications are subject to change without notice. © 2009 Fujitsu Canada, Inc. All rights reserved. FCI-03.06.2009-E